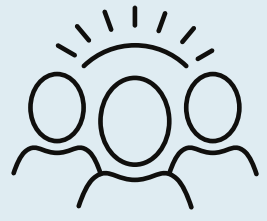


THE UPDATES AT YDL

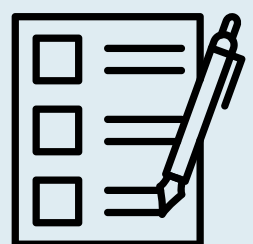
TNDC CONTRACT OPERATOR,
under direction of STIKINE AIRPORT SOCIETY



BACKGROUND



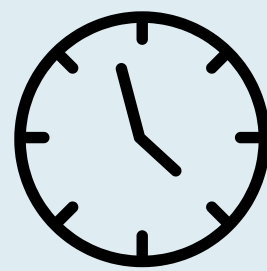
The Dease Lake Airport is a vital **community infrastructure** that is relied upon by the community, government & industry



A 2018 inspection by **Transport Canada Civil Aviation** found several key issues at YDL

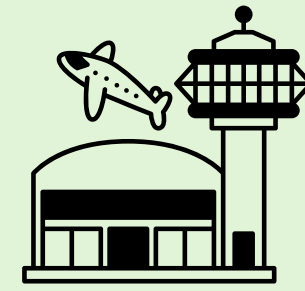


Deficiencies and limited-service accessibility impacted the safety of the mineral exploration, mine development, mining & wildlife service industry



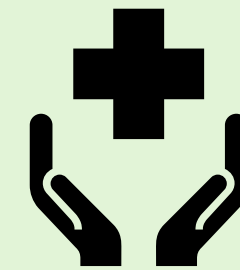
Medevac times were excessively high, placing additional health risk on patients during medical duress

RESULTS WITH TNDC AT YDL



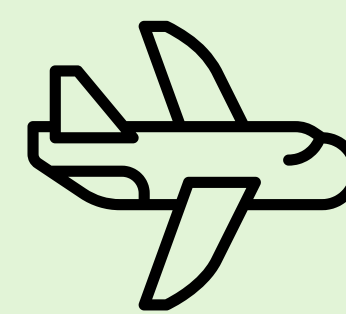
Airport Facility

Safety improvements and year-round, 24-7 operational capabilities



Medevac Times

reduced from 20.5 hours to 5.3 hours



Air Access

improvements to communities for industrial sectors



Wildlife

and emergency response improved



Passenger Service

support planned

WHAT HAS BEEN ACHIEVED



24/7 Operational Capabilities



No-fly days decreased 75% in 2021



On track to triple successful medevacs



Paving the path for scheduled & passenger flights

MĒDUH



Ministry of
Transportation
and Infrastructure



Ministry of
Energy, Mines and
Low Carbon Innovation



BC Emergency
Health Services



Galore Creek Mining
CORPORATION



Iskut
Band Council



NEWCREST

Newmont™



Regional District of
Kitimat-Stikine

SEABRIDGE GOLD



SKEENA

TAHLTAN
BAND



TĀLTĀN

TAHLTAN CENTRAL
GOVERNMENT



TahltanNation
DEVELOPMENT CORPORATION